



WATERHOG® ECO PREMIER & WATERHOG® CLASSIC TILE

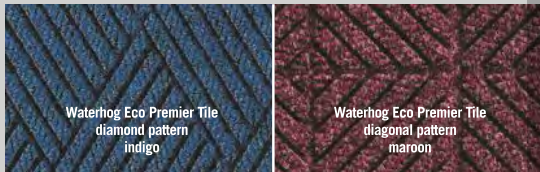
ENTRANCE/SCRAPER-WIPER/INDOOR-OUTDOOR



Waterhog Eco Premier Tile
diamond pattern
southern pine



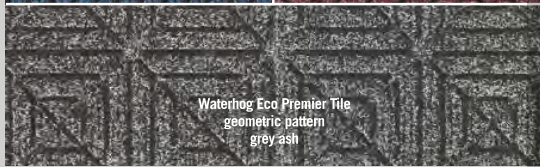
Waterhog Classic Tile
geometric pattern
dark brown



Waterhog Eco Premier Tile
diamond pattern
indigo



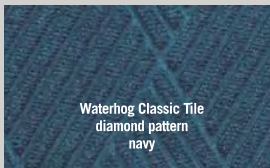
Waterhog Eco Premier Tile
diagonal pattern
maroon



Waterhog Eco Premier Tile
geometric pattern
grey ash

WATERHOG® ECO PREMIER TILE

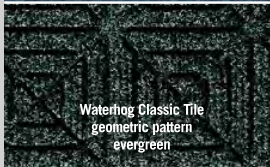
- 30 oz, 100% post-consumer recycled PET Polyester fiber derived from used plastic bottles for the face and a rubber backing
- 18" x 18" tiles, 1/4" or 7/16" pile height
- Diagonal, diamond or geometric pattern. Each pattern may be special ordered with the universal recycle symbol molded into the pattern.
- Permanent rubber reinforced bi-level face will not crush. Provides years of superior dirt and moisture collection.
- Modular flexibility to handle small to large entrances



Waterhog Classic Tile
diamond pattern
navy



Waterhog Classic Tile
diagonal pattern
bordeaux



Waterhog Classic Tile
geometric pattern
evergreen



Waterhog Classic Tile
classic square
bluestone

WATERHOG® CLASSIC TILE

- Offers the same outstanding cleaning performance and benefits as the Waterhog Classic mat
- Premium 24-ounce anti-static, 100% polypropylene fiber system dries quickly and won't fade or rot
- 18" x 18" tiles, 1/4" or 7/16" pile height
- Classic square, diagonal, diamond or geometric pattern
- Designed to be installed in high-traffic areas such as entrances, recessed mat wells, lobbies, vestibules and elevators

WATERHOG ECO PREMIER TILE



170 black smoke

171 indigo

172 southern pine

173 grey ash

174 maroon

175 chestnut brown

176 khaki

177 regal red

WATERHOG CLASSIC TILE



150 camel

151 medium brown

152 dark brown

153 light green

154 charcoal

155 red/black

157 medium grey

158 bluestone

159 evergreen



160 bordeaux

161 navy

162 white

163 aquamarine

164 gold

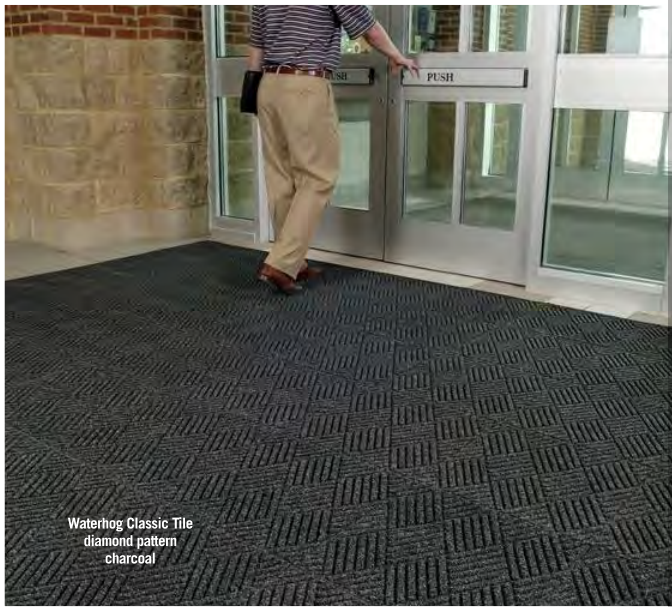
165 solid red

166 yellow

167 orange

168 purple





Waterhog Classic Tile
diamond pattern
charcoal

WATERHOG® ECO PREMIER TILE

ENTRANCE/SCRAPER-WIPER/INDOOR-OUTDOOR

Product No. 2215 Geometric
Product No. 2217 Diagonal
Product No. 2218 Diamond

Pattern	Size(in.)	Thickness	Tiles per case	Quantity/Sug. Retail Price			Wt. (lbs per case)	Sq. ft. per case
				1-6	7-30	31+		
Geo/Diam/Diag	18 x 18	1/4"	12	211.88	205.05	200.94	28	27
Geo/Diam/Diag	18 x 18	7/16"	10	231.07	223.62	219.14	41	23

WATERHOG® CLASSIC TILE

ENTRANCE/SCRAPER-WIPER/INDOOR-OUTDOOR

Product No. 210 Square
Product No. 216 Diamond
Product No. 219 Diagonal
Product No. 220 Geometric

Pattern	Size(in.)	Thickness	Tiles per case	Quantity/Sug. Retail Price			Wt. (lbs per case)	Sq. ft. per case
				1-6	7-30	31+		
Square	18 x 18	1/4"	12	173.49	167.89	164.53	32	27
Square	18 x 18	7/16"	10	183.59	177.67	174.12	40	23
Geo/Diam/Diag	18 x 18	1/4"	12	173.49	167.89	164.53	32	27
Geo/Diam/Diag	18 x 18	7/16"	10	183.59	177.67	174.12	40	23



Waterhog Classic Tile
geometric pattern
charcoal

ADHESIVE



Multi-purpose solvent free adhesive
Low odor
Indoor and outdoor installations

\$53.99 Per Gallon



Mat Logo Company
P.O. Box 150160
Cape Coral, FL 33915
T 888-628-5646
F 888-628-7628